



Industrial Printers

GX4000i Pro series

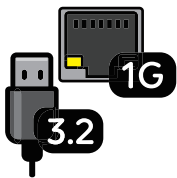
Ultra-high speed Industrial Thermal Printer with an intuitive 5" video touch screen.

The GODEX GX4000i Pro, in its 600 dpi version, produces razor sharp results while maintaining the fastest 600 dpi throughput at 8 IPS. With a robust steel design, the GX4000i Pro comes equipped to support your most demanding applications and will thrive in all environments.



PDF Printing

Directly print PDF files without needing a driver, making them compatible with various operating platforms such as Windows/Linux/Android/iOS/MAC.



Fast Transmission

Equipped with a USB 3.2 gen 1 and Ethernet 1000 mbps transmission interface, providing lightning-fast transfer rates to enhance the efficiency of printing. No more bottlenecks during heavy production!



IEEE 802.1X Protocol

Supports 802.1X network authentication, providing a more secure network authentication process for users who are using LAN transmission.



Wireless Connectivity

Can be paired with a USB WiFi or Bluetooth dongle to enable wireless connectivity (for supported Dongle info, refer to user manual).

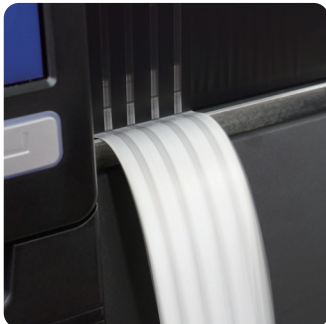


"Endure the Harshest, Print the Finest"

With a robust aluminum cast frame, the GX4000i Pro can withstand the most demanding environments while maintaining the intricacies of precision printing.

"Simple Control, Let Efficiency Roll"

Equipped with a 5" touch screen LCD and 16GB of storage, the GX4000i Pro offers intuitive controls along with built-in video assisted guidance, making printer operation easier than ever.

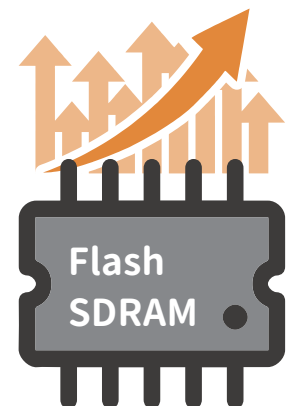



"Versatile Resolutions for Every Application"

The GX4000i Pro series offers a variety of resolutions to meet all high-volume and application needs. Top speeds include 16 inches per second at 203 dpi, 12 inches per second at 300 dpi, and 8 inches per second at 600 dpi.

"More Storage, More Flexibility"

Equipped with 2GB of SDRAM and 16 GB of Flash memory, the GX4000i Pro has more than enough storage for 1000's of labels, fonts and/or images, making standalone functionality far more flexible, and giving it the ability to print large batch files seamlessly while maintaining superior throughput.



Model				
		GX4200i Pro	GX4300i Pro	GX4600i Pro
Print Method		Thermal Transfer / Direct Thermal		
Resolution		203 dpi (8 dots/mm)	300 dpi (12 dot/mm)	600 dpi (24 dot/mm)
Print Speed		Up to 16 ips (406 mm/s)	Up to 12 ips (305 mm/s)	Up to 8 ips (203 mm/s)
Print Width		4.09" (104 mm)	4.09" (104 mm, up to 105.7 mm)	4.09" (104 mm up to 105.6 mm)
Print Length		Min. 0.12" (3 mm)** ; Max. 400" (10,160 mm)	Min. 0.12" (3 mm)** ; Max. 350" (8,890 mm)	Min. 0.12" (3 mm)** ; Max. 100" (2,540 mm)
Processor		32 Bit RISC CPU		
Memory	Flash	16 GB (Free for user storage 12 GB)		
	SDRAM	2 GB		
Sensor Type		Adjustable reflective sensor and transmissive sensor, left aligned		
Media	Type	Continuous form, gap labels, black mark sensing, and punched hole; label length set by auto sensing or programming		
	Width	Tear: Min. 1" (25.4 mm) – Max. 4.65" (118 mm) Cutter: Max. 4.61" (117 mm) Dispenser / Rewind: Max. 4.65" (118 mm)		
	Thickness	Min. 0.0024" (0.06 mm) – Max. 0.01" (0.25 mm)		
	Label roll diameter	Max. 8" (203.2 mm) with 3" (76.2 mm) core		
	Core diameter	Min. 1.5" (38.1 mm) – Max. 3" (76.2 mm)		
Ribbon	Types	Wax, wax/resin, resin		
	Length	Max. 1476' (450 m)		
	Width	Min. 1.18" (30 mm) – Max. 4.33" (110 mm)		
	Ribbon roll diameter	3" (76.2 mm)		
	Core diameter	1" (25.4 mm)		
Printer Language		EZPL, GEPL, GZPL, GDPL auto switch		
PDF Documents		Supports to print PDF documents		
Software	Label design tool	GoLabel II (for EZPL only) (Windows)		
	Management tools	GoTools (Windows / Android / iOS) GoUtility (Windows)		
	APP	GoAPP (Android / iOS)		
Driver		Windows 7, Windows 8 & 8.1, Windows 10, Window11, Windows Server 2008 R2, 2012, 2012 R2, 2016, 2019, 2022, MAC, Linux		
SDK		Win CE, .NET, Windows 7, Windows 8 & 8.1, Windows 10, Windows 11, Android, Mac, iOS		
Resident Fonts	Bitmap fonts	6, 8, 10, 12, 14, 18, 24, 30, 16X26 and OCR A & B 0°, 90°, 180°, 270° rotatable, single characters 0°, 90°, 180°, 270° rotatable 8 times expandable in horizontal and vertical directions		
	TTF Fonts	(Bold / Italic / Underline) 0°, 90°, 180°, 270° rotatable Internal TTF Fonts x5 : Traditional Chinese, Simplified Chinese, Japanese, Korean, Western languages		

Download Fonts	Bitmap fonts	0°, 90°, 180°, 270° rotatable, single characters 0°, 90°, 180°, 270° rotatable
	Asian fonts	16x16, 24x24. Traditional Chinese (BIG-5), Simplified Chinese(GB2312), Japanese(S-JIS), Korean (KS-X1001) 0°, 90°, 180°, 270° rotatable and 8 times expandable in horizontal and vertical directions
	TTF fonts	(Bold / Italic / Underline) 0°, 90°, 180°, 270° rotatable
Barcodes	1-D Bar codes	China Postal Code, Codabar, Code 11, Code 32, Code 39, Code 93, Code 128 (subset A, B, C), EAN-8/EAN-13 (with 2 & 5 digits extension), EAN 128, FIM, German Post Code, GS1 DataBar, HIBC, Industrial 2 of 5, Interleaved 2-of-5 (I 2 of 5), Interleaved 2-of-5 with Shipping Bearer Bars, ISBT-128, ITF 14, Japanese Postnet, Logmars, MSI, Postnet, Plessey, Planet 11 & 13 digit, RPS 128, Standard 2 of 5, Telepen, Matrix 2 of 5, UPC-A/UPC-E (with 2 or 5 digit extension), UCC/EAN-128 K-Mart, Random Weight and Pharmacode
	2-D Bar codes	Aztec code, Code 49, Codablock F, Datamatrix code, MaxiCode, Micro PDF417, Micro QR code, PDF417, QR code, TLC 39, GS1 Composite, DotCode, Marco PDF 417
Code Pages		Codepage 437, 737, 850, 851, 852, 855, 857, 860, 861, 862, 863, 865, 866, 869 Windows 1250, 1251, 1252, 1253, 1254, 1255, 1257 Unicode UTF8, UTF16BE, UTF16LE
Graphics		Resident graphic file types are BMP and PCX, other graphic formats are downloadable from the software
Interfaces		<ul style="list-style-type: none"> • USB 3.2 Gen 1 (Type B) • Serial port (RS-232) • Ethernet 10/100/1000 Mbps (IEEE 802.1X) • USB Hosts x 3 (Type A). 2 ports at the front panel, 1 port at the rear panel
Wireless Connection		Supports commercially available Linux USB dongle (WiFi, BT) ***
Control Panel		<ul style="list-style-type: none"> • Backlight 5" touch screen LCD supports on-board videos • 1 Power on/off button with blue LED backlight • 1 Control key: FEED/PAUSE/CANCEL with three color LED backlight: Ready (Blue); Error (Red); Calibration (Green) • 1 Calibration button at rear panel
Real Time Clock		Standard
Power		Internal auto switching power supply Input: AC 100-240V, 50-60Hz
Environment	Operation temperature	41° F to 104° F (5° C to 40° C)
	Storage temperature	-4° F to 140° F (-20° C to 60° C)
Humidity	Operation	20-85%, non-condensing.
	Storage	10-90%, non-condensing.
Agency Approvals		CB, CE (EMC), FCC Class B, ICES-003, cULus, UKCA, Energy Star ****
Dimension	Length	460 mm (18.1")
	Width	269 mm (10.6")
	Height	309 mm (12.2")
Weight		13.6 Kg (30 lbs), excluding consumables
Options		Cutter module (User Install) – Rotary cutter, Guillotine cutter, Perforation cutter, High speed cutter, Paper card cutter Label Dispenser + Internal rewinder module (Dealer Install) Applicator Interface (DSUB female 15-pin) RFID R/W module (project option) External label unwind stand External label rewinder

* Specifications are subject to change without notice. All company and/or product names are trademarks and/or registered trademarks of their respective owners.

** Minimum print height and maximum print speed specification compliance can be dependent on non-standard material variables such as label type, thickness, spacing, liner construction, etc. Godex is pleased to test non-standard materials for minimum print height, and maximum print speed capability.

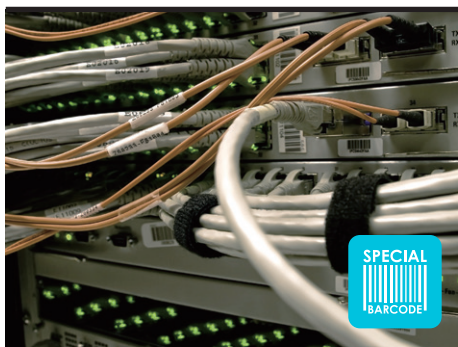
*** Verified USB dongle brands and models, please refer to User Manual for detailed information.

**** The safety certification marks may be different depending on sales regions.

Applications

Applications for Labels & Barcodes

GX4000i Pro series is extremely versatile and can be used for most applications.



Special Materials

Small components labeling, name Plates, Plastic tubes, Plastic cards, Cable labeling.



Warehouse

shelf labels, product labels, stocking management, exterior/pallet labeling, etc.



Manufacturing

product labels, manufacturing labels, exterior/pallet labels, trade, stocking and document management, etc.

GoDEX RIBBONS

Godex offers premium thermal transfer ribbons that will fit most of your printing applications.

- Wax
- Wax/ Resin
- Resin
- Near Edge



GoDEX SOFTWARE

GoLabel II Label design software



GoLabel II is based on a WYSIWYG (what you see is what you get) user interface, making everything so easy for users to create and print barcode labels.

GoLabel II is the first-choice in label design software, and all you need to start creating your own labels today!

GoTools Stay Cool!

Available for download now!!



Forget about installing complicated software, GoTools will show you the easiest way.



GoUtility can help users monitor GoDEX's printer status and deploy data to multiple printers through a concise user interface at the same time.